



Welcome to **SOLLEFTEÅ!**



Learn more about
living and working in
Sollefteå Municipality

SOLLEFTEÅ - A POWERFUL COMMUNITY

Kayaker?

**Fishing
Enthusiast?**

Sports fan?

**Runner or
cyclist?**

Outdoorsy?

Our unique landscape with steep riverbanks (called nipor), river valleys, lakes and forests offer amazing outdoor experiences.

Enjoying your leisure time here is easy!

Go kayaking, fish for salmon in the Ångermanälven River, go for a bike ride in the forest or on a country road, hike high or low on mountains and in forests, or swim in sun-warmed lakes, in icy rivers or in temperate pools.

Wide range of club activities!

In the municipality, there are a wide variety of clubs and associations specializing in different forms of culture, sports, and outdoor activities.



Moving to Sollefteå?

Please contact us!

Local Citizen Service

Sollefteå Municipality

+46 (0)620-68 20 00

inflyttarservice@sollefteå.se



Everything at your fingertips!

Finding the balance between work and leisure is easy in our municipality. Enjoy your favorite activities together with family and friends instead of spending your time commuting to and from work.

During the winters, an abundance of snow provides lots of fun on our ski slopes and extensive cross-country skiing tracks. Our outdoor arenas provide activities all year round for both kids and adults.

We prioritize our children and invest a lot of time and money in all forms of education.





Welcome to Sollefteå - Welcome home!

Sollefteå Municipality offers relocation service for anyone considering moving here or when you just have arrived. Maybe your head is spinning thinking about work, housing, preschool, school, and leisure activities. We are happy to guide you while seeking employment and activities for the whole family.

We'd love a visit!

We would be happy to arrange a visit to your area of interest for you to get a feel for the area and the people in our beautiful municipality.

Live here - work there?

Do you dream about leaving the big city for a new quality of life in the countryside, but don't want to give up your job? Today's digitalization makes it possible to live in one place and work someplace else. Many companies are currently looking to employ remote workers.

Good to know!

Local Citizen Service

Sollefteå Municipality
+46 (0)620-68 20 00
www.solleftea.se

Medborgarkontor

Näsåker +46 (0)622-68 30 00
Junsele +46 (0)621-68 40 00
Ramsele +46 (0)623-68 50 00

namforsen.com

junsele.nu

ramsele.com

gosolleftea.se

www.landsbyggare.se

Inspirational films about passionate entrepreneurs in the High Coast area

Change of adress

www.adressandring.se/in-english

Work

Swedish Public Employment Service

+46 (0)771- 416 416
www.arbetsformedlingen.se

Sollefteå Municipality

www.solleftea.se/ledigajobb

<https://jobb.blocket.se>

www.offentligajobb.se

energidalen.nu/kraftjobb



Hospital and Clinics:

Sollefteå Hospital
+46 (0)620-190 00

Clinics are also available in Ramsele and Junsele

+46 (0)620-190 00

Renting or buying an apartment?

+46 (0)

Sollefteå

Allfa Fastigheter AB,
026-51 53 80. allfa.se

Niphaga AB Fastighetsförvaltning,
070-365 97 20

Älvtorpet Bostäder i Sollefteå AB,
060-53 90 20

SP Fastigheter,
060-15 14 30. spfastigheter.se

Stadskronan Fastigheter AB,
08-630 10 03. stadskronan.se

Carlsson Fastigheter
073-811 04 30. carlssonfastigheter.se

Kurhults Trä & Förvaltning AB,
070-748 78 17. kurhult.se

ADR Fastigheter, 070-291 70 68,
adrfastigheter.se

GZ Fastigheter & Förvaltning AB,
070-255 77 11, zetterkvist.com

NP3 Fastigheter, 0620-519 04,
np3fastigheter.se

Håkan Hagberg, 070-534 90 90

M&M Ådalen AB, 070-644 61 16

Quadratum, info@quadratum.se

Björklunden, 073-026 14 33,
bjorklunden.se

Långsele & Sollefteå

Betjäningen Fastigheter,
070-664 41 47. betjaningen.se

Långsele

HEDAW Fastighetsteknik AB
070-302 81 39

Resele & Sollefteå

Kjell Mähler 070-652 96 27

Municipality wide

Solatum Hus & Hem AB,
0620-68 28 60. solatum.se





Business Commerce and industry department

Telephone: 0620-68 20 00
Facebook: Sollefteå Näringsliv
www.sollefteå.se/naringsliv

www.verksamt.se

Varied business sector - powerful job market

Of the 19 000 people who live in Sollefteå Municipality, approximately 8000 reside in the town of Sollefteå. Junsele, Ramsele, Edsele, Näsåker, Resele, Långsele and Undrom are examples of vibrant villages throughout the municipality.

A varied business sector - The majority of businesses in the municipality are small, but there are also a few larger private companies. There are a total of 1,100 businesses registered in the municipality.

Some of our larger employers are - Eon, Statkraft, Vattenfall, Uniper, AQ Enclosure, Haglöf Sweden AB, Thermotech Scandinavia AB, Hedströms Åkeri, Själanders & Brorssons åkeri, Edsele Såg and Östanbäcks Timmerhus.

"Sollefteå - a powerful community" - with a powerful job market!

Our economy is mainly based on primary industries such as power production and forestry. Businesses deriving from these industries include lumber yards, haulage companies, and forestry companies. Production companies, such as builders or companies producing measuring equipment and components for the energy sector are also common areas of business.

Care and welfare are also sectors that provide plenty of work opportunities.

Tourism is growing!

The Hallstaberget ski resort with endless cross-country skiing tracks, a biathlon stadium, downhill skiing, ski jumping, mountain biking and more, attracts tourists from near and far. The Hotel Hallstaberget is located smack-dab in the middle of the ski slope.

cont. rentals:

Edsele

Edsele Fastigheter, 070-458 14 92,
www.edsele.se

Ramsele

Nordkarl Fastigheter, 070-309 99 87
Landsbygdsfastigheter, 073-727 06 06

Framtidens Skog i Ramsele AB
073-622 83 58

DWL Fastigheter, 070-363 11 97

Ramsele Rental 070-364 80 79

Grönytor Fastighet AB 070-372 57 65

Kristoffer Lundin tel. 070-508 10 60

Hasse Karlström 070-271 21 79

Näsåker

Själanders Fastighetsförvaltning
0622-107 00

Tommy Pettersson 070-666 89 89

Junsele

Ådalen Fastigheter, 0621-100 90.
adalenfastigheter.se

Finding your dream house – in the countryside or in town?

Höga Kusten Fastighetsbyrå,
0620-911 00
Fastighetsbyran.com/hogakusten

Harrelinds Fastighetsbyrå AB
070-620 25 55. harrelinds.se

Ludvig & Co/Skogsbyrå
0620-259 20. ludvig.se

HSB Västernorrland, 010-303 23 00
hsb.se/sodra-norrland

Hemnet.se

Plots and Building Permits

Planning department
0620-68 20 00

New plots for villas
Prästbordet, Sollefteå
Anna Törner 0620-68 20 00

Facebook:

Boende och lokaler i Sollefteå kommun
Sollefteå Ödehus

Time to apply for school or daycare?

Please contact
Local Citizen Service
+46 (0)620-68 20 00

Apply through E-services at
www.solleftea.se
Förskola/fritidshem/
pedagogisk omsorg

Daycare

Eva Olsson & Mona Mähler
0620-68 20 00

Preschool and elementary school

Operations manager
Sara Mattsson

Sollefteå Upper Secondary School

Principal
Monika Karlström

Adult education & SFI

Principal
Christer Sjödin

Reveljen

Development manager
Maria Modin

Adult education / Upper Secondary School

Operation manager
Anders Åkerman



Sollefteå Skiing High School

has produced many successful athletes over the years;

Frida Karlsson, Ebba Andersson,
William Poromaa,
the sisters Hanna and Elvira Öberg,
Sebastian Samuelsson,
Magdalena Forsberg and
Helena Ekholm to name a few.



Kids are our greatest gift!

Sollefteå municipality offers quality childcare and education motivated by enjoyment and learning. We take every opportunity to offer physical outdoor activities all year round.

Preschool, elementary school, and after-school care

Our goal is that every child and student's positive expectations are fulfilled in an educational environment that nurtures the joy to learn. The preschool lays the foundation for a lifetime of learning. In our elementary schools and after-school care programs, we make sure that each student gets the guidance necessary for personal growth and education. In our schools, we combine both indoor and outdoor activities to ensure a stimulating educational environment.

Arts and Music School (kulturskolan)

Kulturskolan caters to children and youths between 5 - 18 years of age with an interest in art, dance, movies, music, and theatre. Kulturskolan is available throughout the municipality, although courses may vary depending on where you live. Contact us for more information!

"When we offer tools to express emotions, we strengthen not only the students but also the society and the world" Quote: Kulturskolan faculty

High School

The Sollefteå High School offers a wide selection of interesting programs. There are approximately 650 students attending 12 national programs with several orientations, introductory programs, and the High School for children with intellectual disabilities.

Sollefteå Skiing High School

Sollefteå is renowned throughout Sweden for combining high school education with intense ski training, aimed at producing top-level athletes in cross-country skiing and biathlon. Our unique resources include the best trainers and a fantastic environment suited for both studies and training.



Enjoyable leisure time!

Please contact
Local Citizen Service
0620-68 20 00
for more information.

A list of clubs and
associations
can be found at
www.solleftea.se

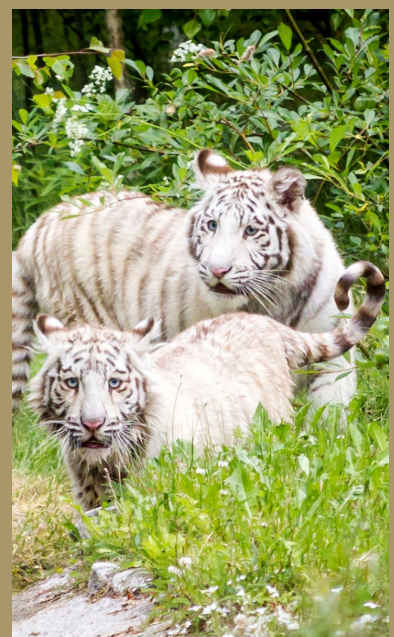
Tourist Information
High Coast Tourist Centre
0771-265 000
www.hogakusten.com

gosolleftea.se

Family time or hanging out with friends? Combine nature, culture, and sports!

In the municipality, there are three riding schools, two bowling alleys, three public indoor pools, and three temperate pools, as well as multiple gyms and sports clubs. You can enjoy everything from skiing, floorball, martial arts, curling, orienteering, dance, and more.

The culture associations offer a rich variety of film, music, and theatre activities. If you love the spotlight, a choir or the amateur theater might be of interest.





The Pride of Sollefteå!

Frida Karlsson
Elite cross-country skier



” Sollefteå provides everything I need in life while striving towards becoming the world’s best cross-country skier.

The dramatic landscape with its steep hills, the Hallstaberget resort that provides physical challenges in both winter and summer, and a nice small town where I can walk around like the Frida I’ve always been.





Re-establishment of the I21 regiment!

The historical decision of the Parliament to re-establish the I21 regiment in Sollefteå is a milestone in the expansion of Sollefteå municipality. The military returns after nearly 20 years.

The decision does not only involve a strengthening of the Swedish military, but also generates large investments and hundreds of new job opportunities in Sollefteå municipality.

The regiment was installed at the beginning of 2022, with both regimental staff and national service training commencing later in the year.

The scale of military activity and training will increase and become a vital part of Sollefteå's expansion in the years to come.

Hans Pahlin
Military re-establishment in Sollefteå





The kids Yara and Sterre Pieren, Mom Nicole Pieren Broekema and Dad Marco Pieren.



Entrepreneurs

The Pieren Broekema Family

Living in Undrom

What made you move to Sollefteå?

We met representatives from Sollefteå municipality at a relocation conference in Holland. We had dreamt about moving to Sweden for a long time. We wanted more space; in Holland we are so cramped together. Another reason was the beautiful nature in northern Sweden. We like the climate with white winters and warm, bright summers. The local history is interesting and the opportunities for development in the area are great. We wanted to realize our dreams of owning a farm, and buying a house with lots of land for a reasonable amount.

What do you do?

We run our own company, Fields Sweden "A way of life". This includes many different things, for instance Glamping Höga kusten, pop-up clamping, drone services and work in marketing and media. We are currently planning to expand in the ecotourism area.

What's the best thing about living here?

There is plenty of space and pristine environment. There are great opportunities for both personal and professional growth here.

What do you do in your free time?

We are living our dream, which means that free time and work kind of blend together. We aim to run an environmentally sound project that will add to the development of the area. We want to continue evolving our company and inspire people to live in new ways.

What's your favourite spot?

Our favorite spot is at home on our farm, and to go on excursions all around the beautiful High Coast.



Emma and Adam Holmgren with their kids: Harry, Leon, Axéla and Sigge.

Just Moved In

The Andersson Näsström Family

Living in Sollefteå

What made you move to Sollefteå municipality?

We're both from Sollefteå and when we had children it felt like a good place to start our family and have our children grow up. Being close to parents and family also played a part in the move. The last piece of the puzzle was when both our employers were positive to a transfer to Sollefteå.

What do you work with?

Tobias is regional manager at SCA Skog and Emelie is a project manager at Vattenfall Services.

What's the best thing about living here?

Everything is easily accessible within a short distance, and there are abundant opportunities to enjoy active leisure time.

What do you do in your leisure time?

During the last few years, most of our free time has been spent finishing our previous house in Umeå. In Sollefteå, we will start out living in an apartment to get more time for other interests. In the long run, we would like to buy a house and renovate it. Tobias likes hunting and Emelie enjoys training, mainly running.

What's your favorite spot?

We look forward to spending more time in the outdoors and visiting many of the nice excursion spots in the municipality. Multräberget is a favorite.

Retur-
ners



Tobias Andersson and Emelie Näsström with their son Helmer.

The Holmgren Family

Living in Ramsele

What made you move to Sollefteå?

Partly because of the attractive house prices and partly because we noticed that newcomers were greatly appreciated in the area.

What do you do?

Adam works at a lumber yard and Emma is a stay-at-home mom.

What's the best thing about living here?

The tranquility, the nature, the feeling of community, and the drive to get things done.

What do you do in your free time?

We spend a lot of time together in the outdoors, which has been especially fitting during the pandemic.

What's your favourite spot?

We haven't really found a favorite yet, but we're sure we will have more than one soon enough!



Please contact us!

Local Citizen Service
+46 (0)620-68 20 00
inflyttarservice@solleftea.se
gosolleftea.se
www.solleftea.se



**Solleftea
kommun**



Welcome!

Solleftea
Municipality



Learn more about
living and working in
Solleftea Municipality

**HÖGA
KUSTEN**